

H96PRO+ Upgrade your firmware

1.Install the Burning tool



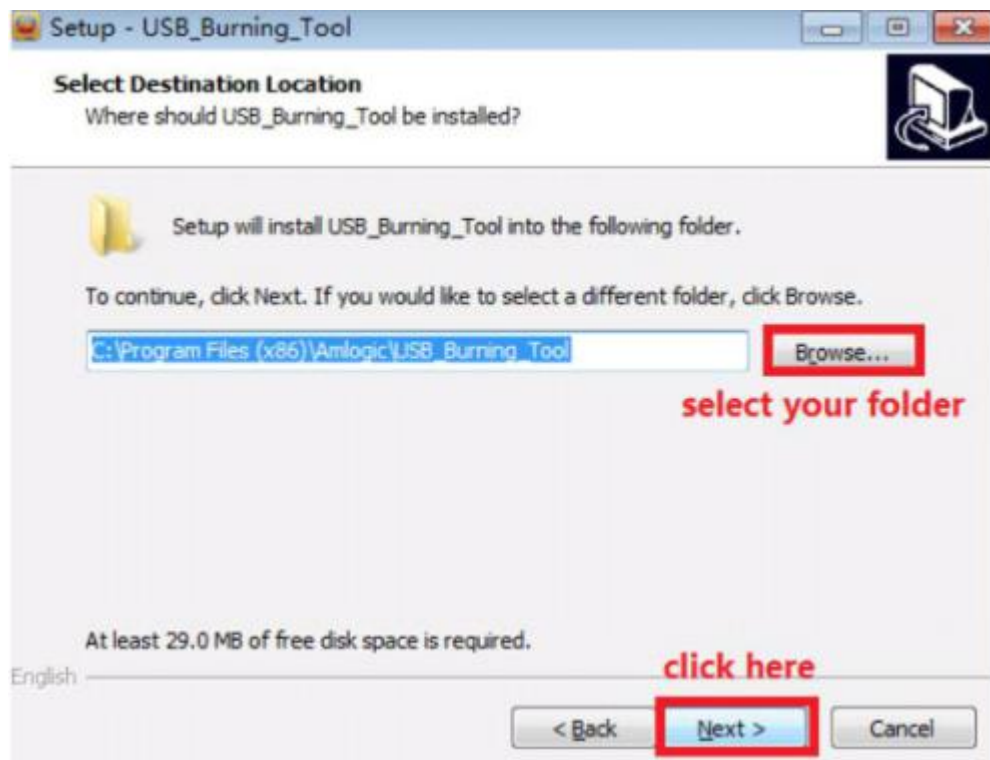
2.select language and click YES



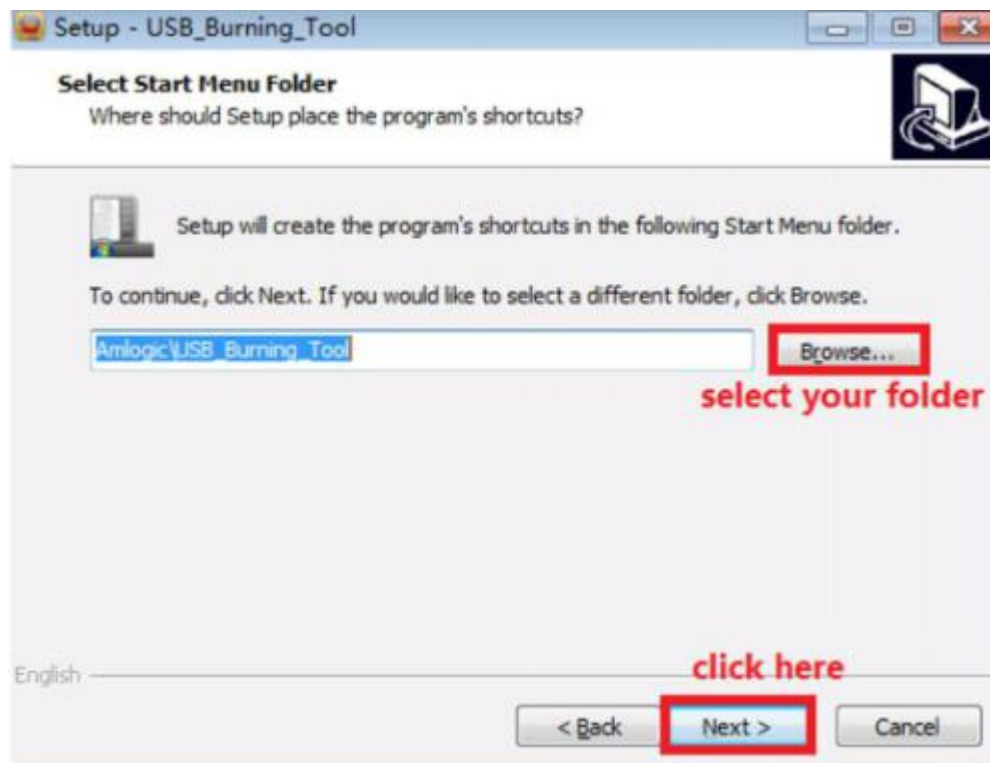
3.click next



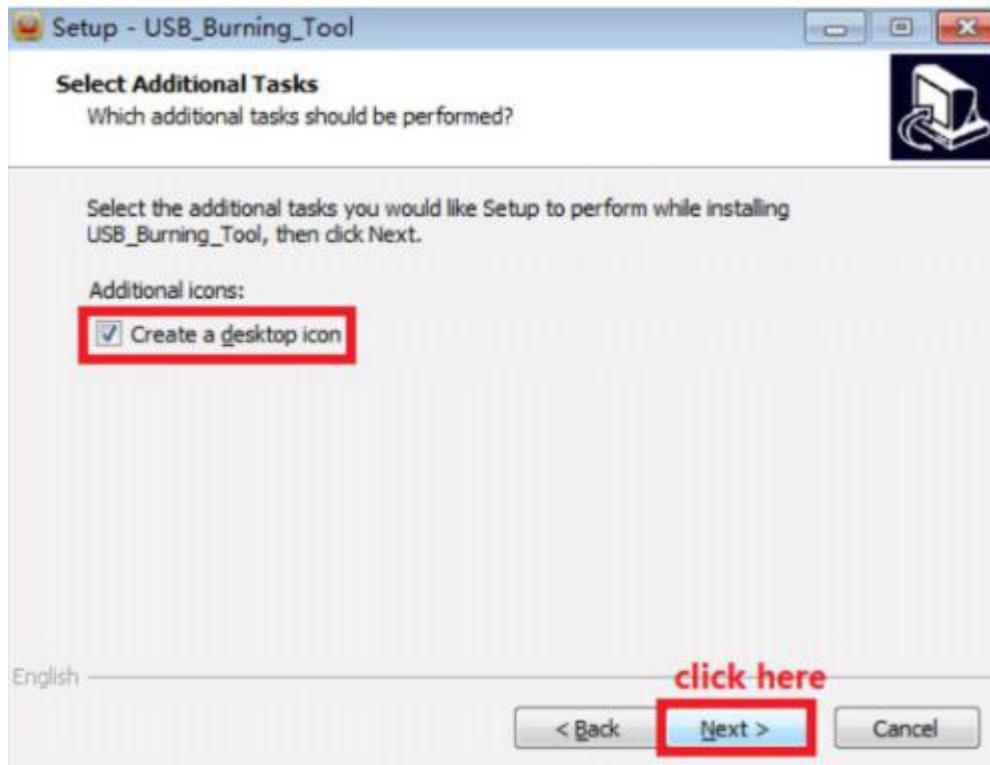
4.select Destination Location



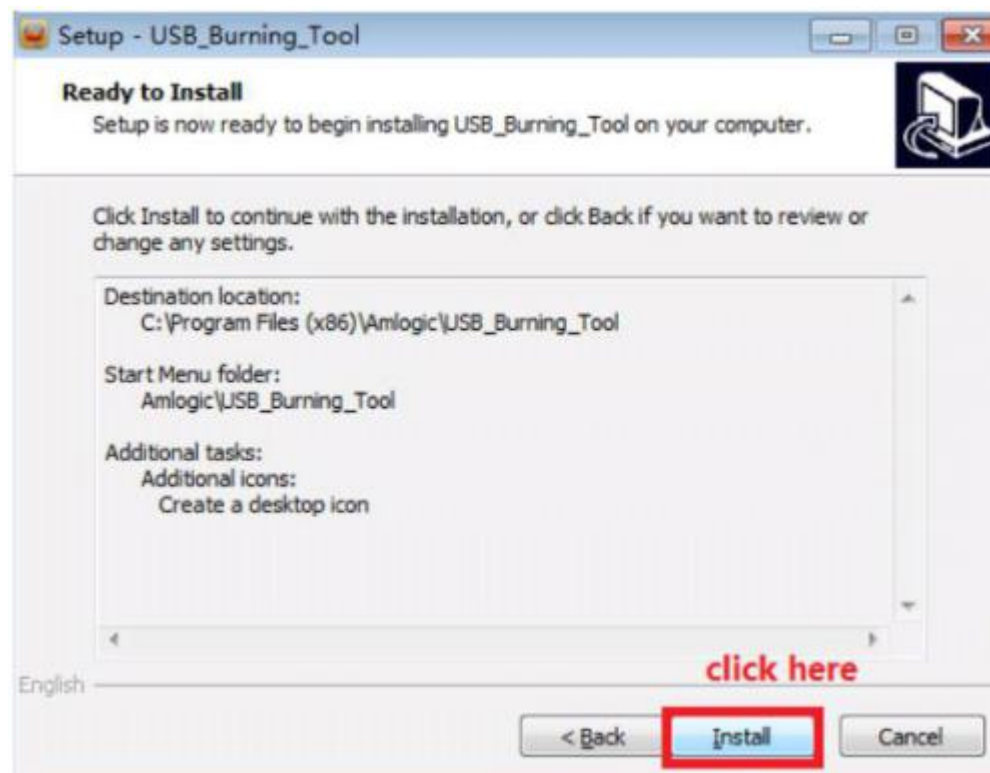
5.select Start Menu Folder



6. select Additional Tasks



7. Install



8. Install the driver



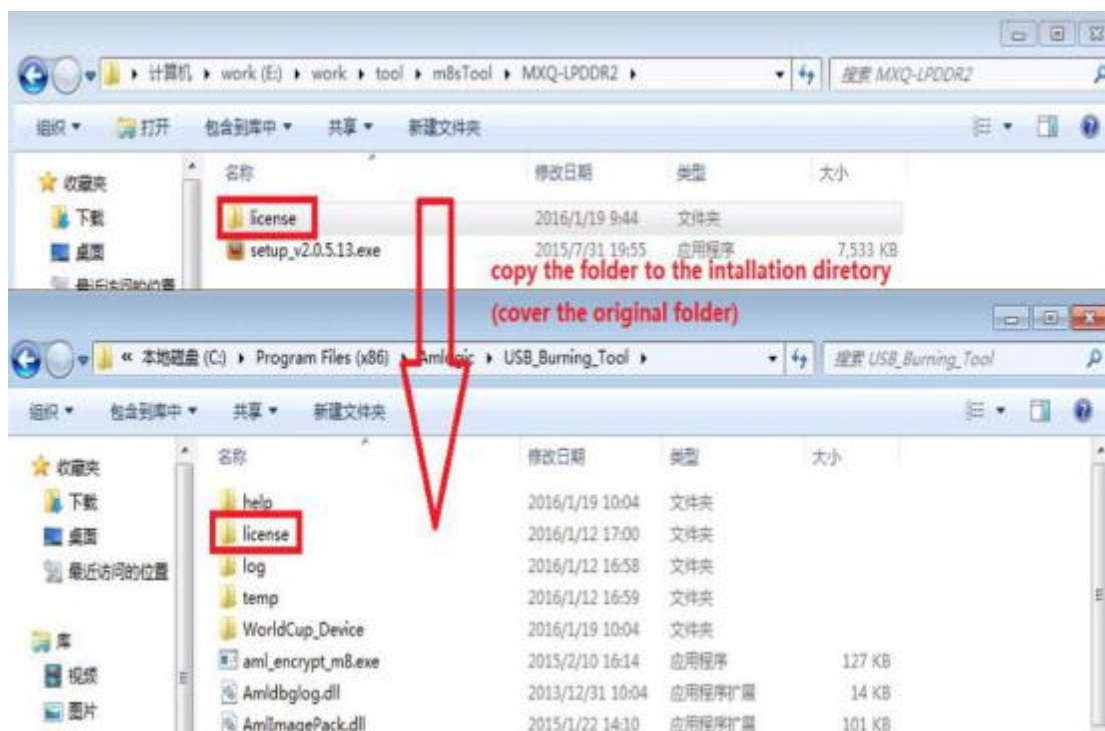
9. click finish



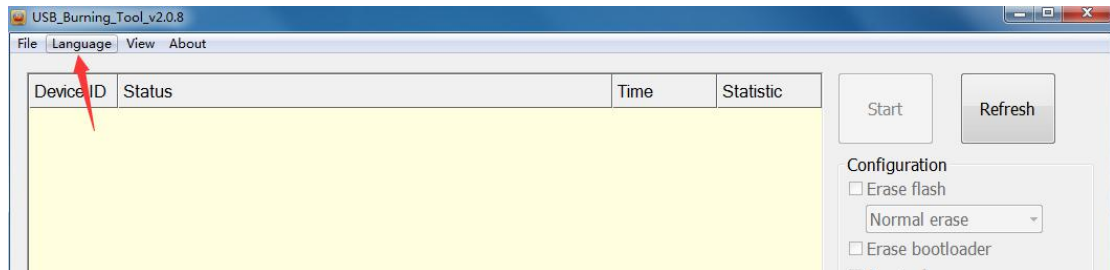
10.click finish



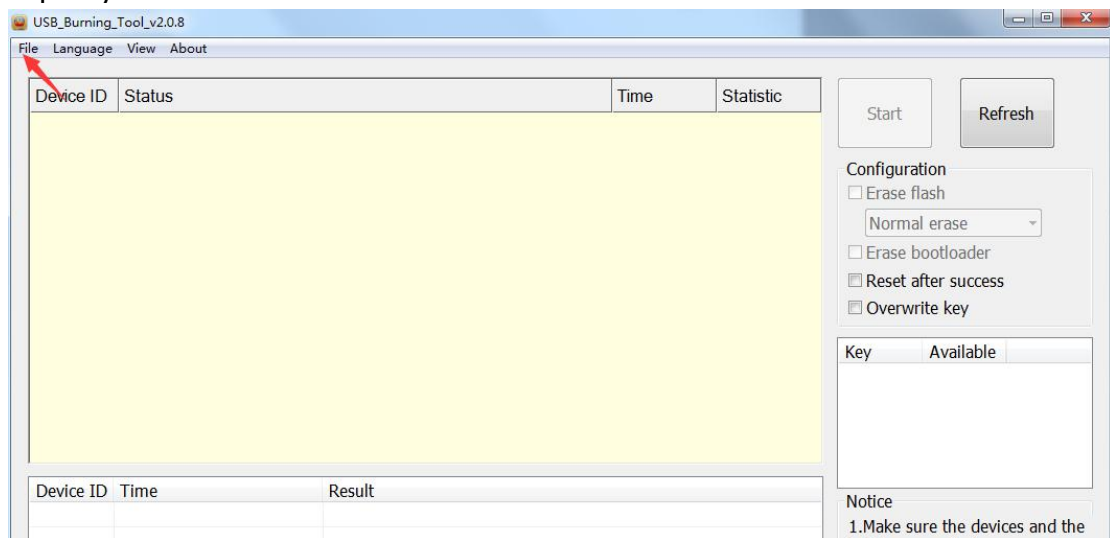
11.replace the license files



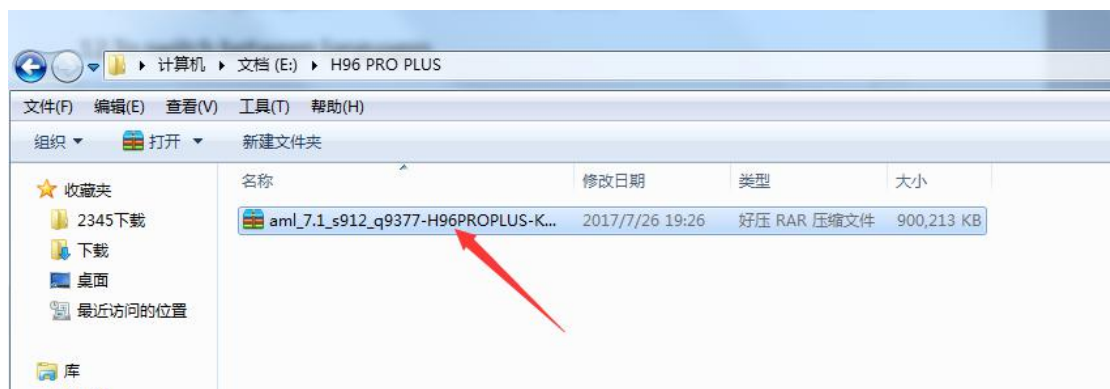
12.To switch between languages



13.Open the USB_Burning_Tool (a shortcut in the desktop) and click File to import your fireware



14.Find out your fireware and click open



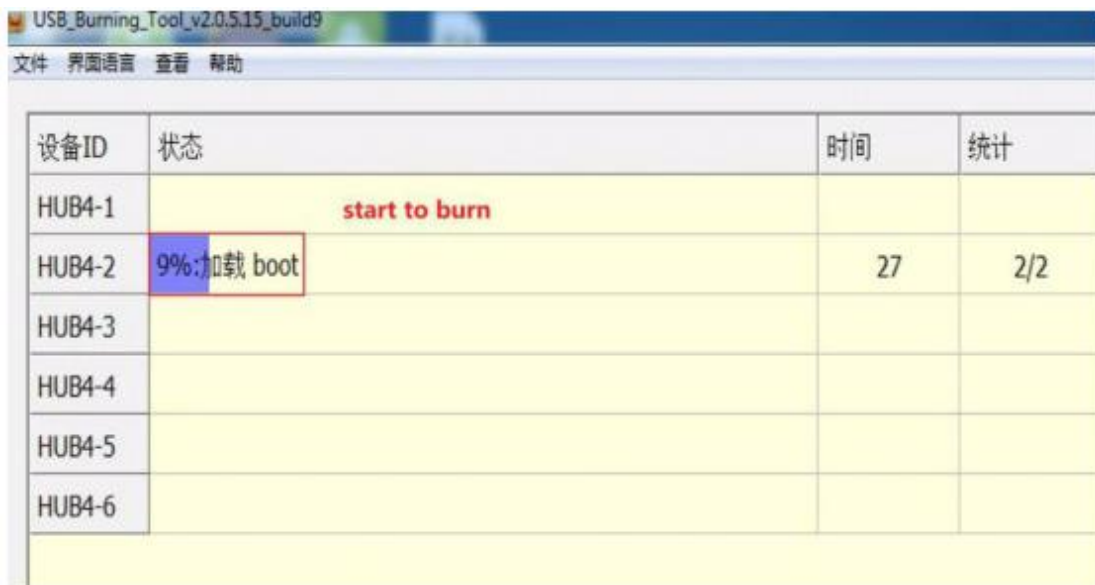
15. Click start



16. Connect the device



17. When the USB_Burning_Tool start to burn, you can connect your power now



The screenshot shows the USB_Burning_Tool v2.0.5.15_build9 application window. The title bar includes the text 'USB_Burning_Tool v2.0.5.15_build9' and a menu bar with '文件', '界面语言', '查看', and '帮助'. Below the menu bar is a table with four columns: '设备ID', '状态', '时间', and '统计'. The table contains seven rows for devices HUB4-1 through HUB4-6. HUB4-1 is in the state 'start to burn'. HUB4-2 is at '9%:加载 boot' with a time of '27' and a count of '2/2'. The other devices (HUB4-3 to HUB4-6) are currently blank in the status column.

设备ID	状态	时间	统计
HUB4-1	start to burn		
HUB4-2	9%:加载 boot	27	2/2
HUB4-3			
HUB4-4			
HUB4-5			
HUB4-6			

To100% is OK